



We 'MOULD' your concepts



THE
TRUSTED
NAME IN
CON-BLOCK MOULD



Dymante Machinery Technology Co.,Ltd

Binjiang Mechanical Equipment Industrial Base,
Quanzhou, Fujian, China.

Tel: +86-595-8650-3663

Fax: +86-595-8650-3663

Email: sales@dymante.com

Web: www.dymante.com



THIS IS DYMANTE....



Founded as a machining workshop in 1995, in Quanzhou city where is home for concrete block machines in China. We have been making parts for block machine manufacturers and developed our first steel mould until 1998.

For more than 20 years, the company Dymante has been specializing in high-grade steel moulds for concrete block industry worldwide. Today, Dymante is the brand name for reliable and innovative technology in this industry.

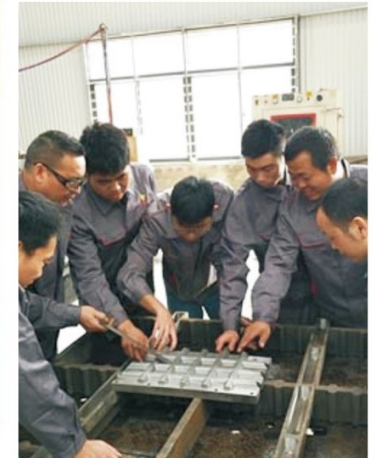


OUR ADVANTAGES

As an engineering partner, we always offer solutions in accordance with our customers' requirements and create new designs and technical innovations.



Our experience combined with state-of-the-art technology ensures high quality moulds.



We are continually developing new solutions for your specific challenges in the production of concrete products.



For core part, use special alloy steel customized from the world top 500 steel company.

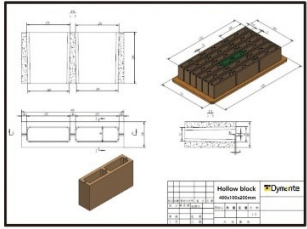
When you choose Dymante as your primary supplier for your mould and mould parts. We deliver:

- ▶ Know-how design
- ▶ Competitive price
- ▶ Cutting-edge manufacturing technologies
- ▶ Quality control in accordance with ISO 9001
- ▶ Timely delivery
- ▶ After-sales support



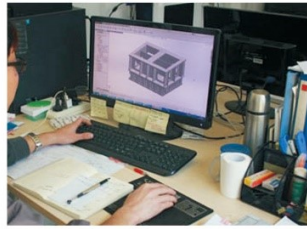
Carbonising and quenching processes ensure to make the mould structure strong and wear resistant.

HOW WE DO IT



1

Order-drawing approval



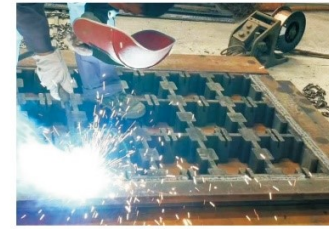
2

3D Engineering design



3

Cutting steel plate by laser cutter



4

Mould bottom welding



5

Weld flaw detection



10

Assembly of tamper shoes



9

Polishing of tamper shoes



8

Milling of tamper shoes



7

Machining mould bottom on CNC



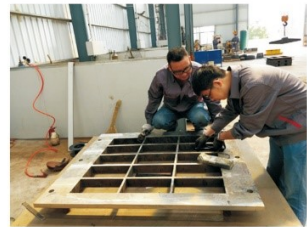
6

Heat treatment hardening process



11

Testing the mould



12

Quality control



13

Painting of the mould



14

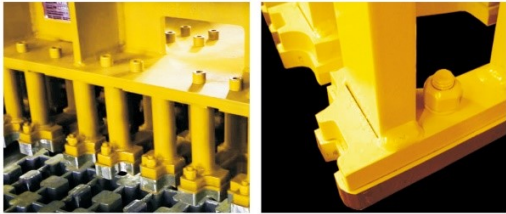
Packaging of the mould



15

Shipping to customer

OPTIONAL FEATURES



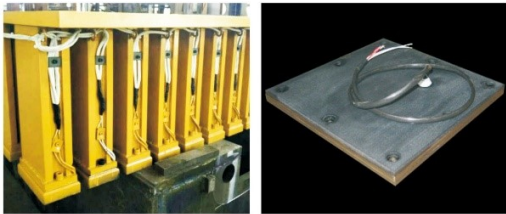
Tamper feet & shoes screwed

Easy exchange of assemblies to reduce any downtime



Flex tamper shoes

Optimal compaction results and perfect surfaces.



Heated tamper shoes

Minimize the sticking of face mix on tamper shoe surface



Core puller mould

Used for unusual block designs with lateral profiling.



Hydraulic displacement wall

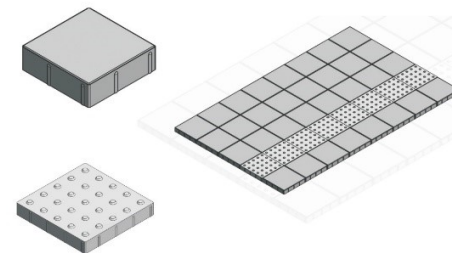
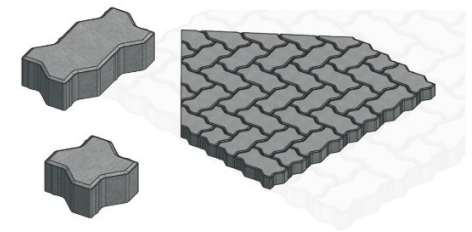
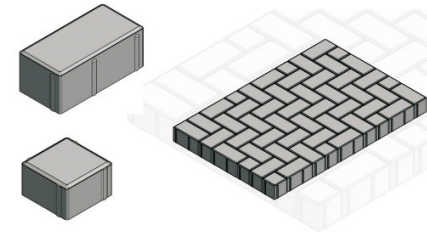
The folding wall enables kerbstones with face mix on the surface and side faces.

PAVING & SLAB STONE MOULDS

- ▶ Tamper feet and shoes screwed
- ▶ Mould cavity done by wire-cutting from single solid steel
- ▶ Frame with mould pick up and rails welded

Options

- ▶ Heated tamper shoes
- ▶ Flex tamper shoes

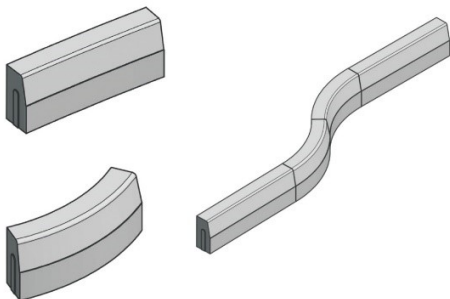
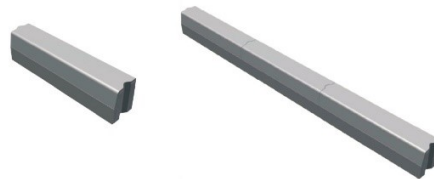
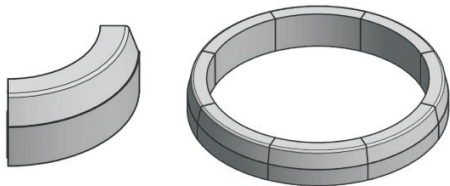
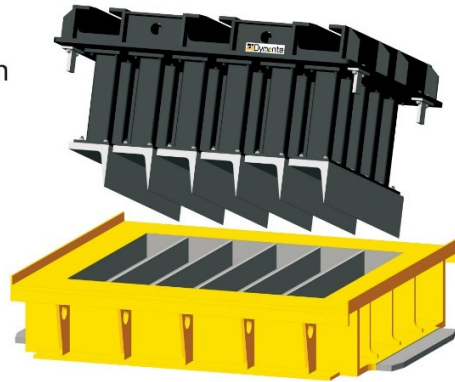


KERBSTONE MOULDS

- ▶ Tamper feet and shoes screwed
- ▶ Mould cavity in module construction welded or screwed
- ▶ Frame with mould pick up and rails welded

Options

- ▶ Hydraulic displacement wall

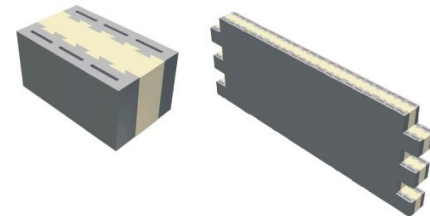
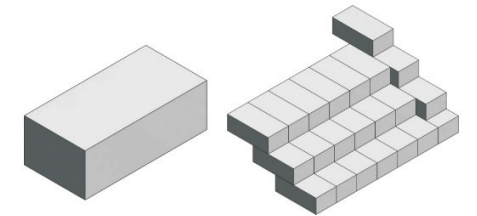
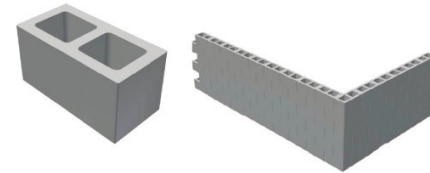


BLOCK & MASONRY MOULDS

- ▶ Tamper feet screwed
- ▶ Cavity, cores and core bars in module construction welded or screwed
- ▶ Frame with mould pick up and rails welded

Options

- ▶ Tamper shoes screwed
- ▶ Core puller

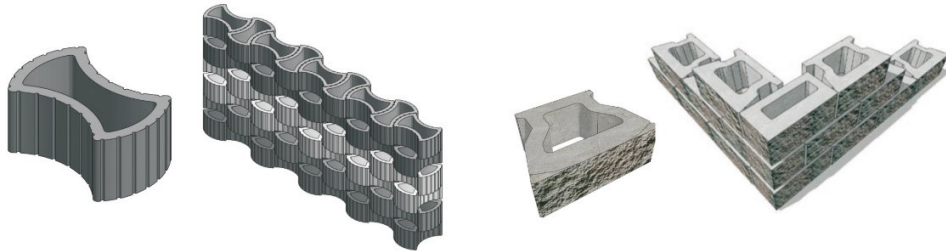


RETAINING WALL MOULDS

- ▶ Tamper feet screwed
- ▶ Mould cavity in module construction welded or screwed
- ▶ Frame with mould pick up and rails welded

Options

- ▶ Tamper shoes screwed



PERMEABLE STONE MOULDS

- ▶ Tamper feet and shoes screwed
- ▶ Mould cavity in module construction welded or screwed
- ▶ Frame with mould pick up and rails welded

Options

- ▶ Heated tamper shoes
- ▶ Flex tamper shoes

